

# edilportale<sup>®</sup>

## TOUR 2018

Efficienza Energetica, Antisismica,  
Comfort Abitativo, NTC2018, Illuminazione,  
Acustica, BIM, Realtà Virtuale

VERONA, 10.05. 2018

## Il muro, la macchina, la rete



Arch. Claudio Lucchin

CL&AA - Claudio Lucchin & Architetti Associati - [www.cleaa.it](http://www.cleaa.it)









# La Scuola Hannah Arendt di Bolzano



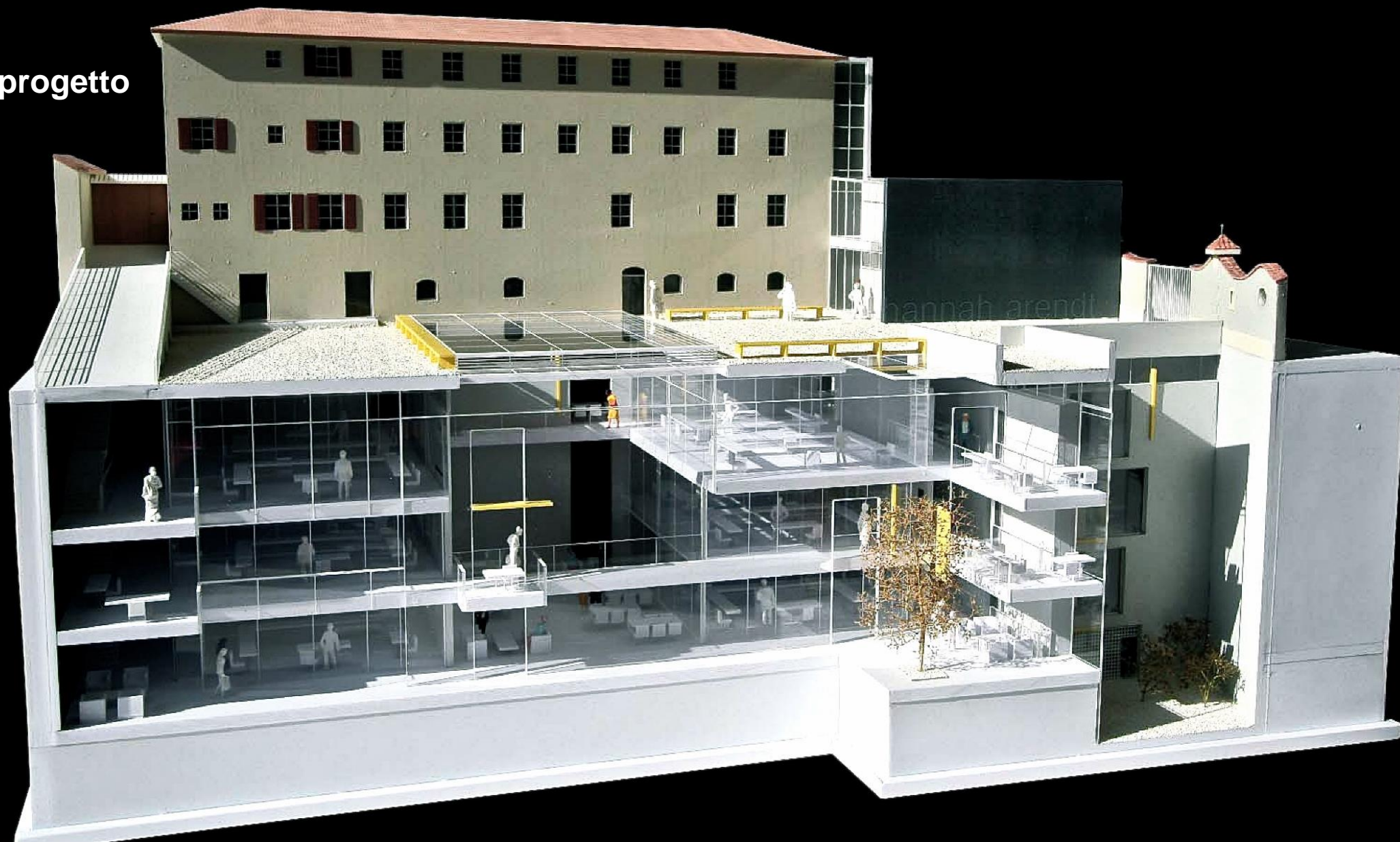
## Il Chiostro dei Cappuccini nel centro storico di Bolzano

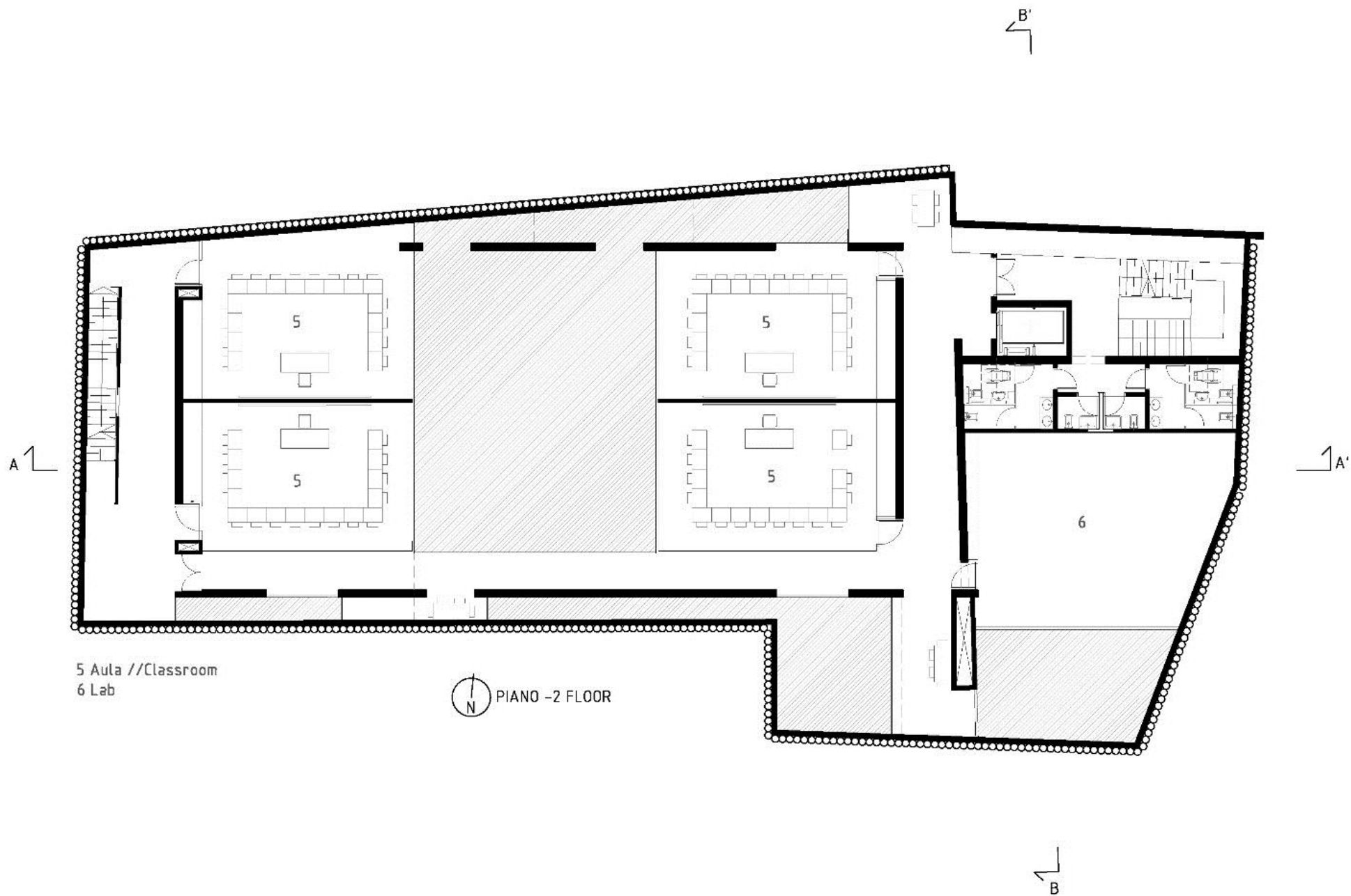


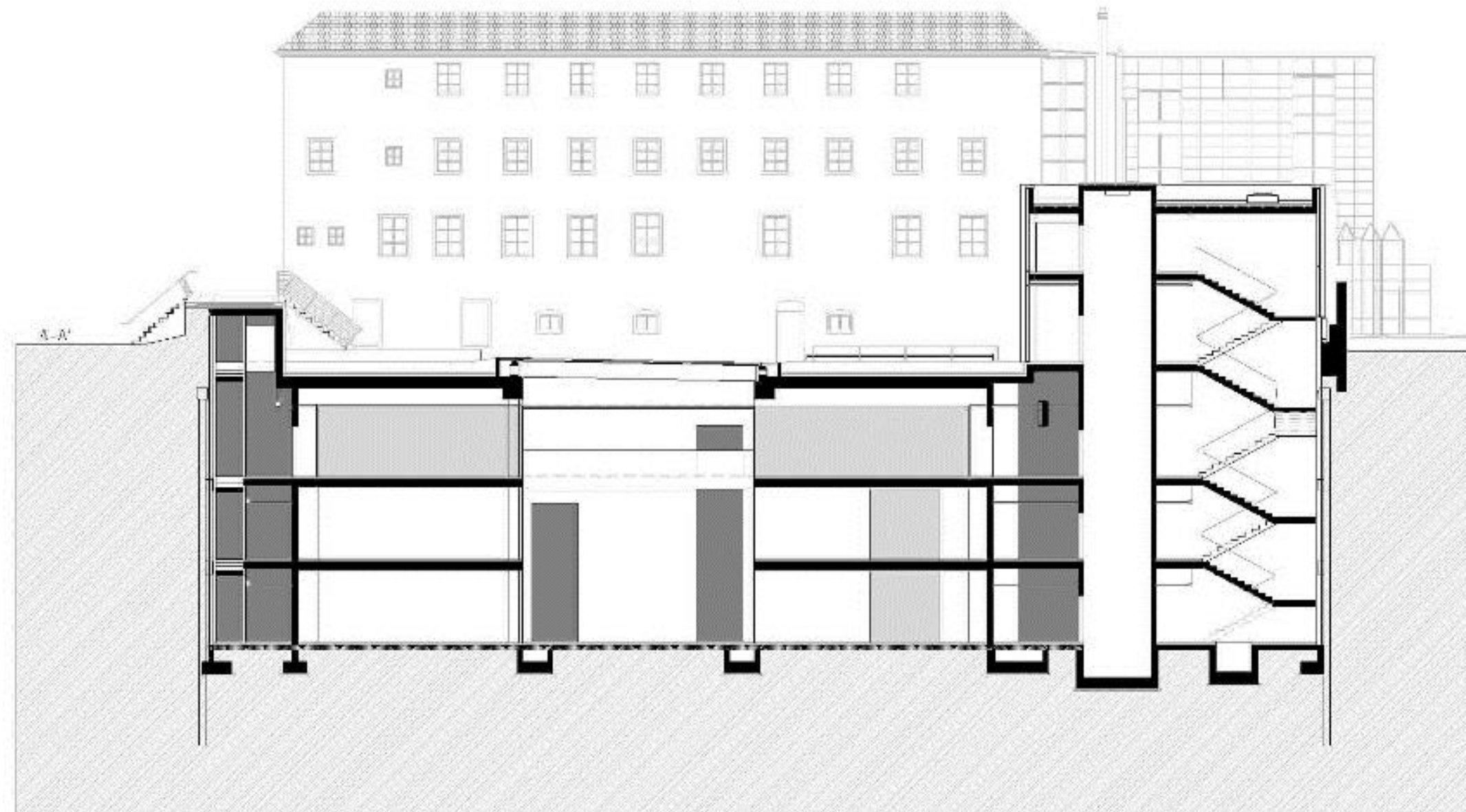




## Il progetto





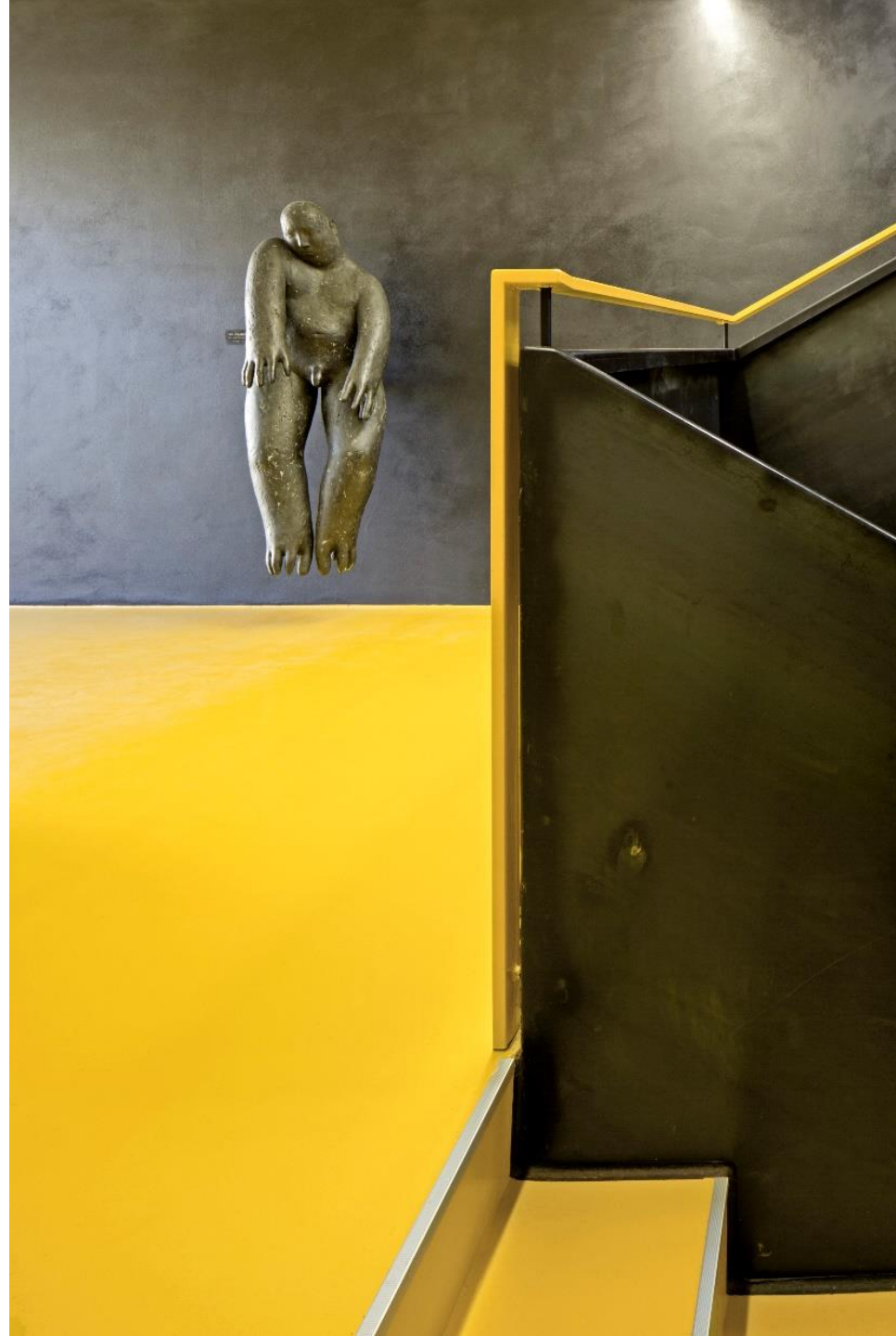


# Il cantiere







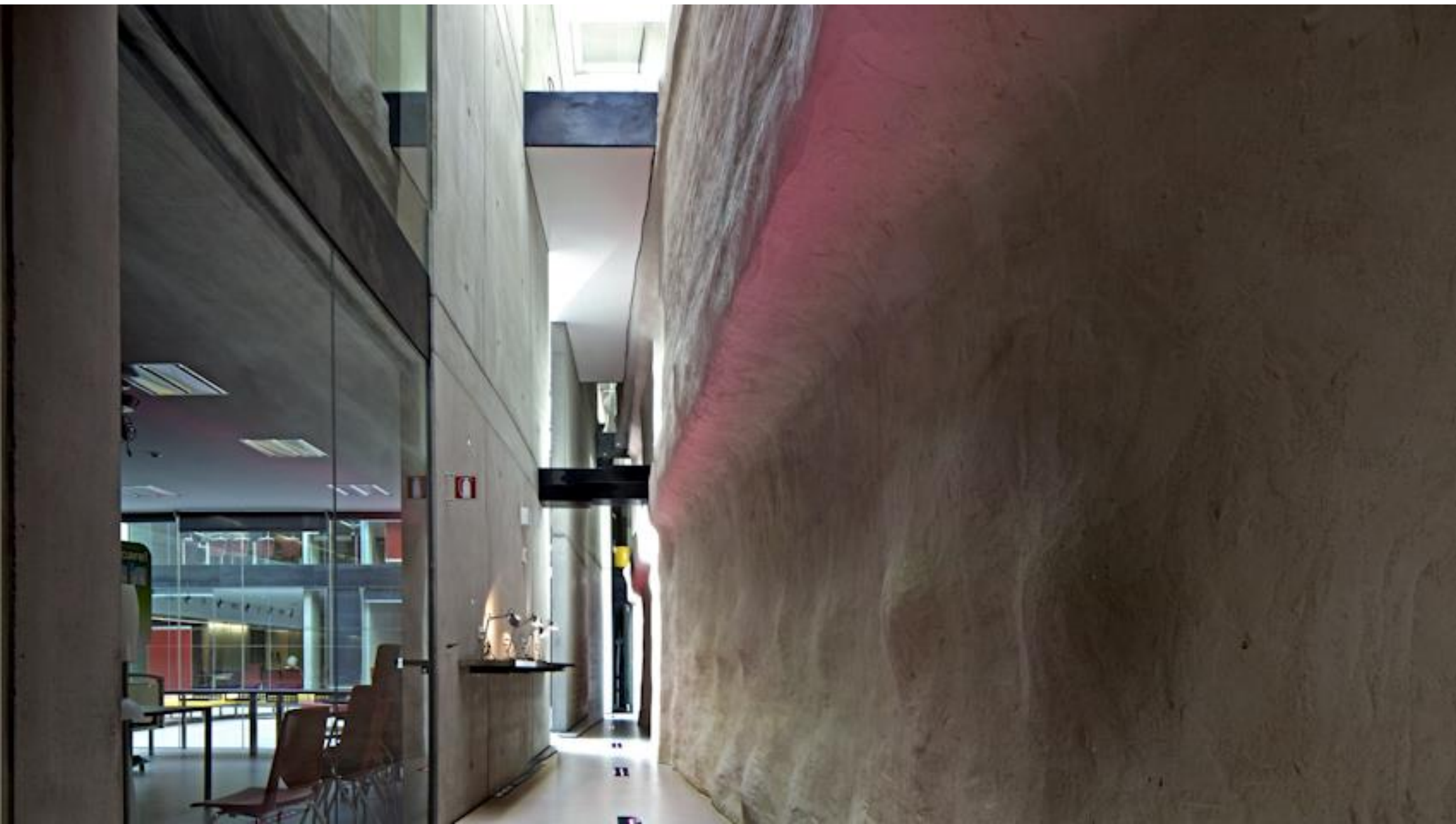




















# Sede Gruppo CAP a Milano

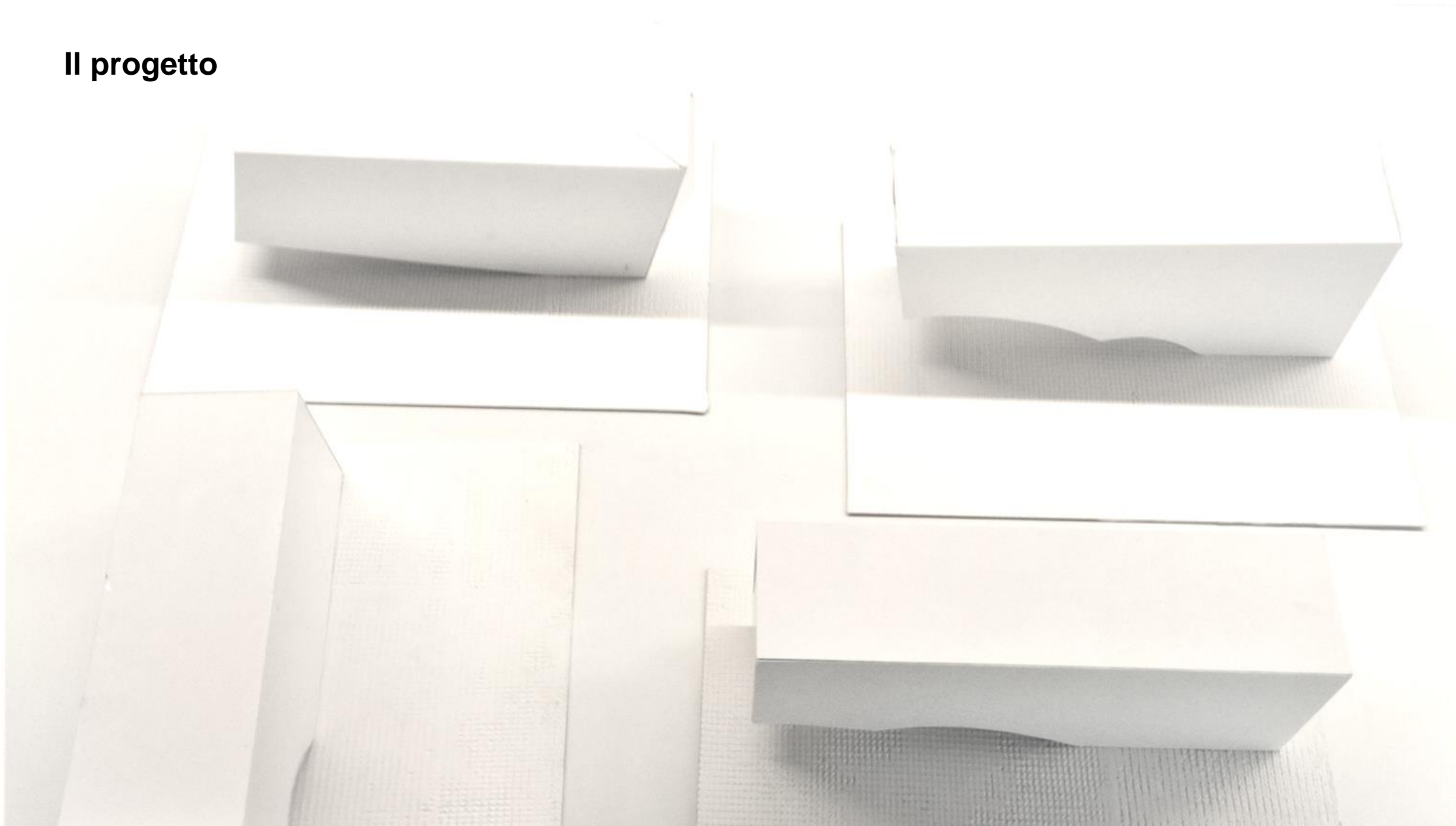


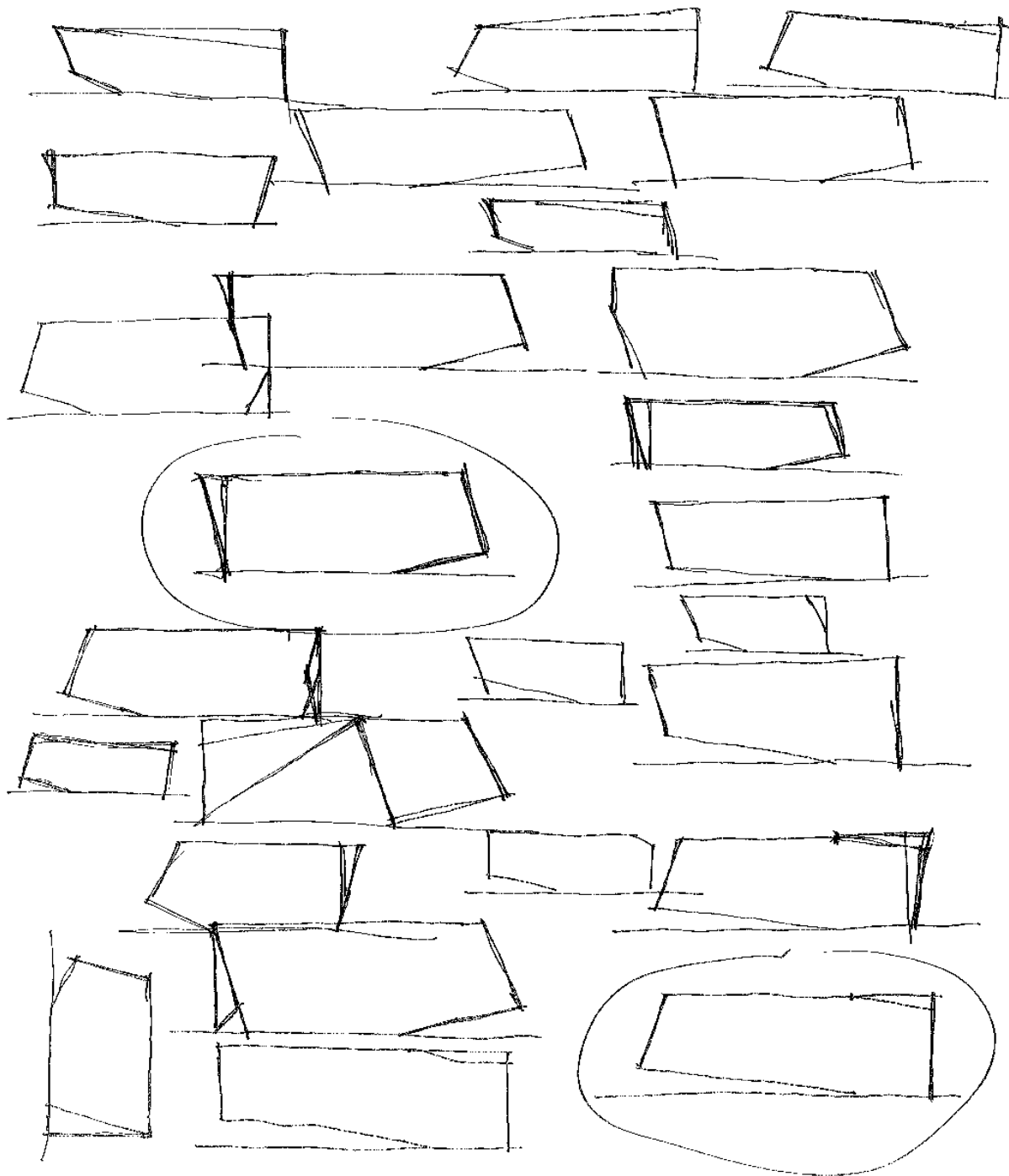


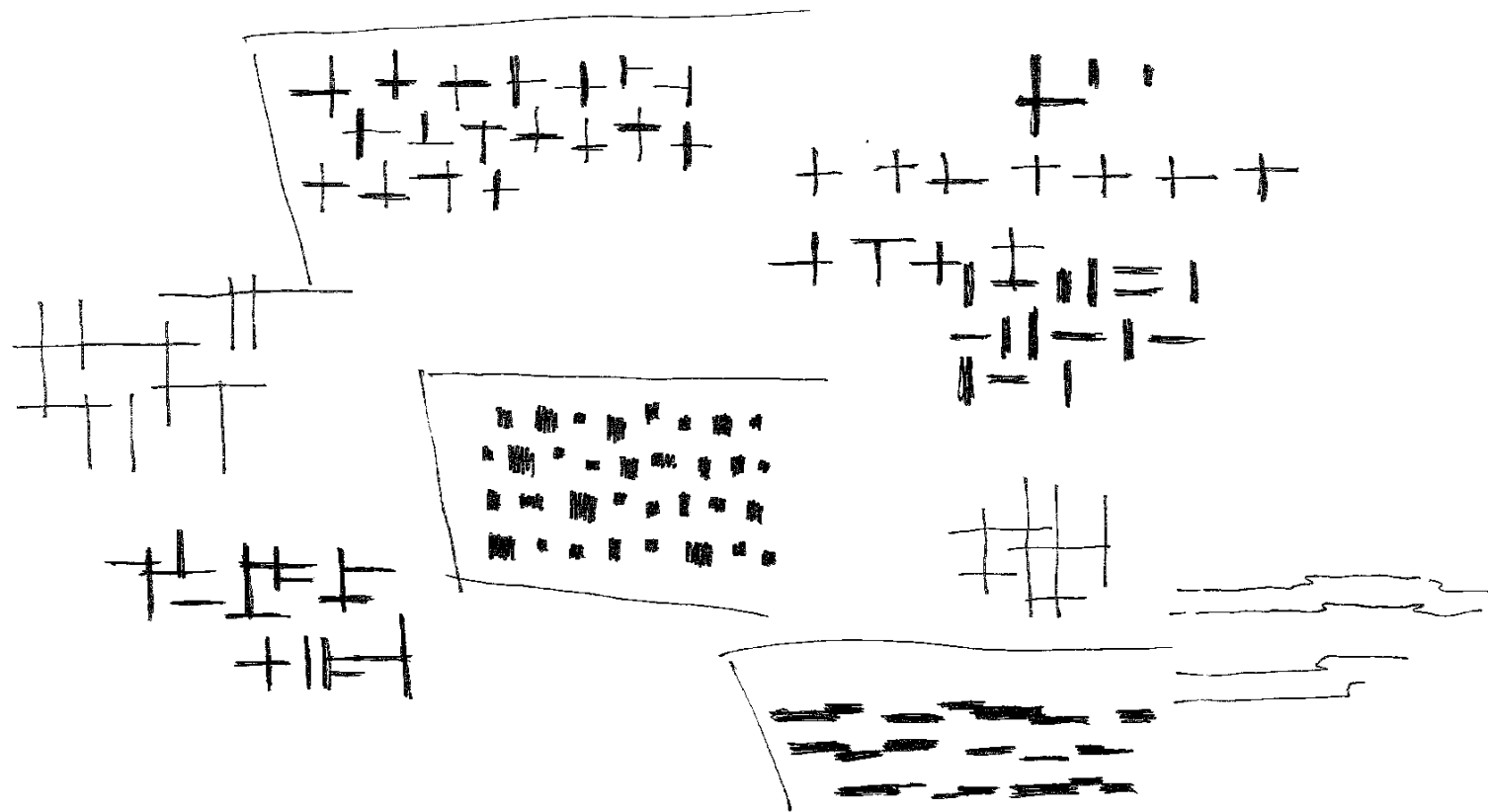
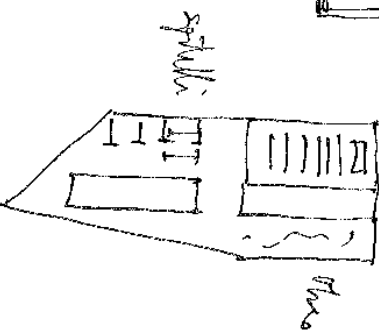
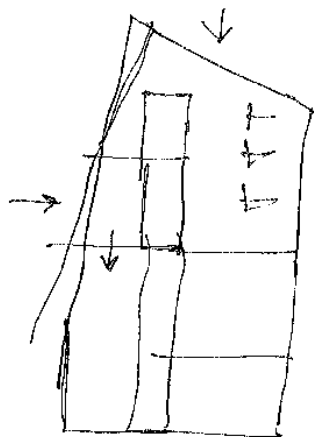
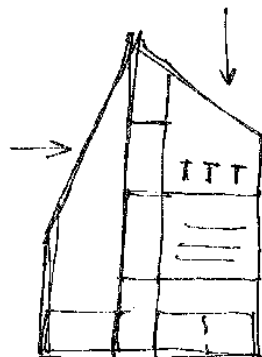
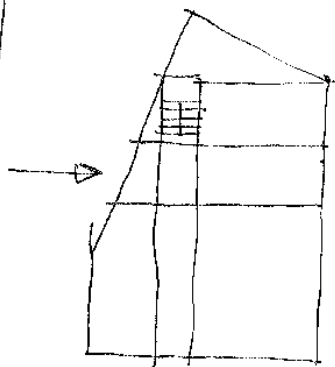
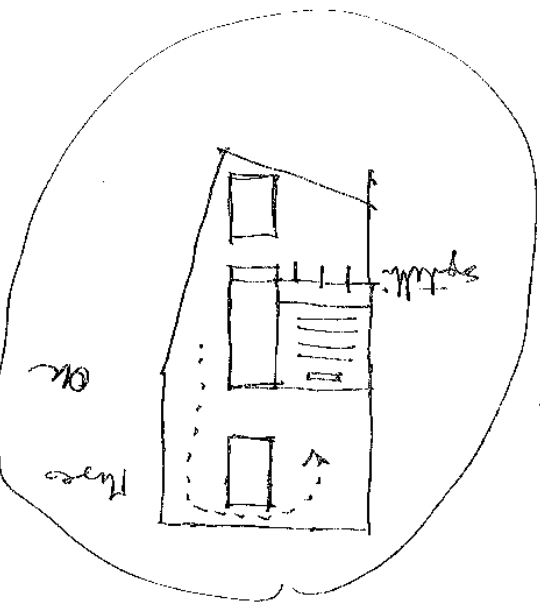
L'area di progetto: Via Rimini

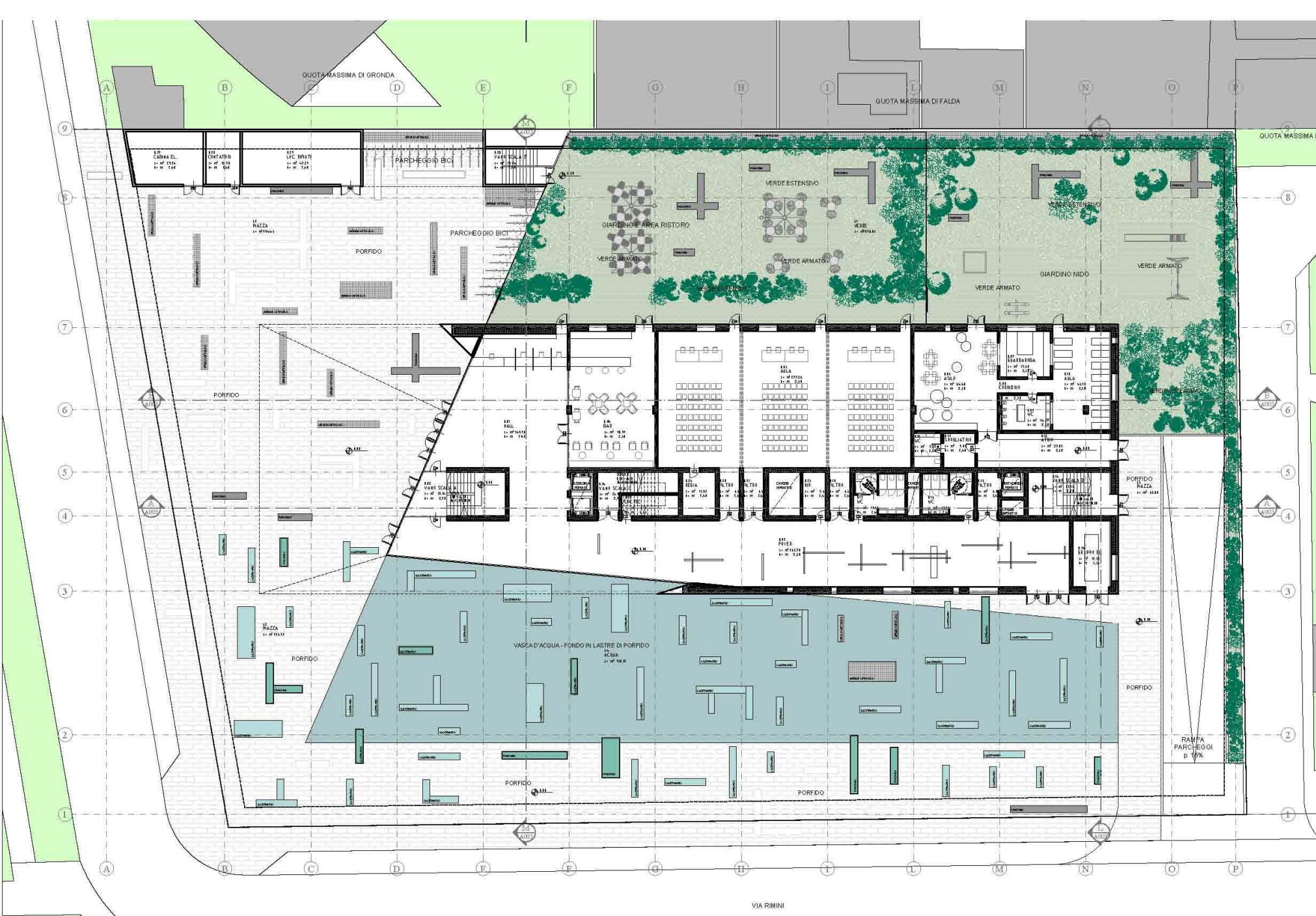


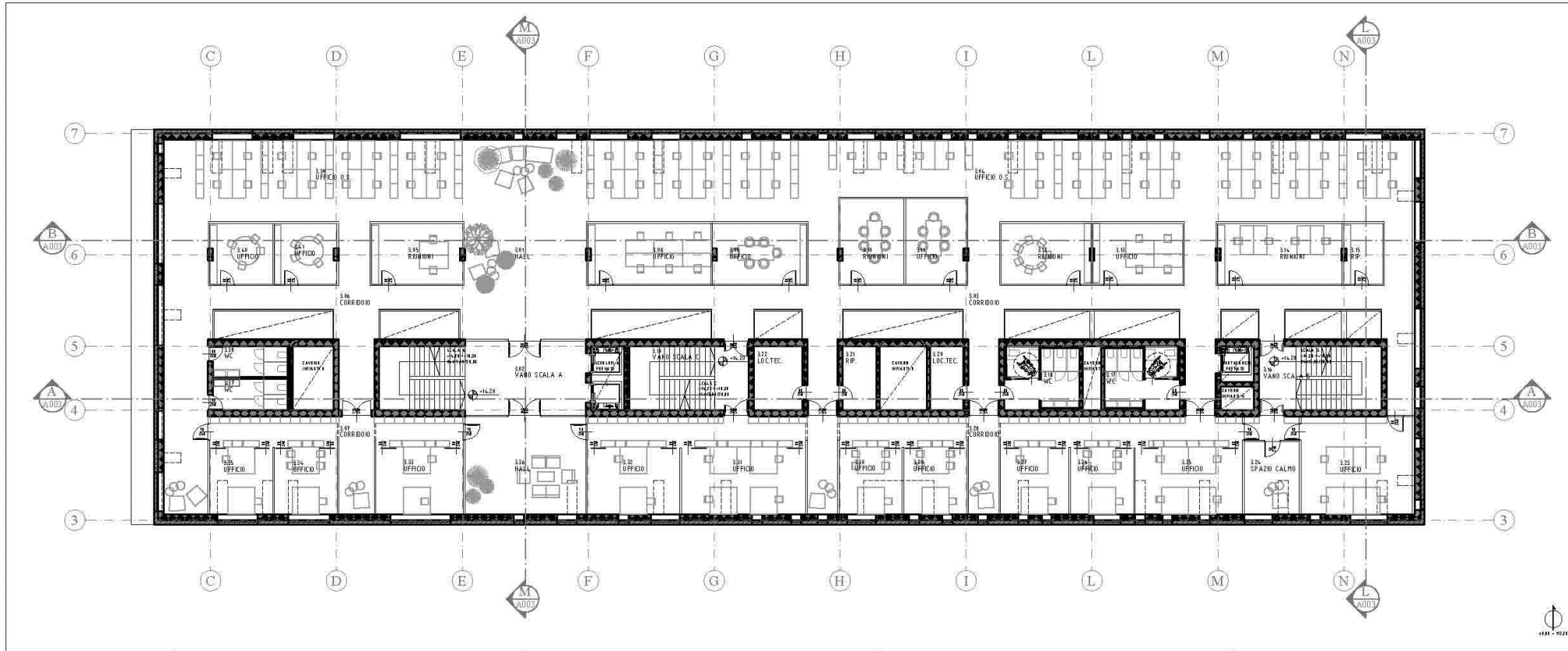
## Il progetto



























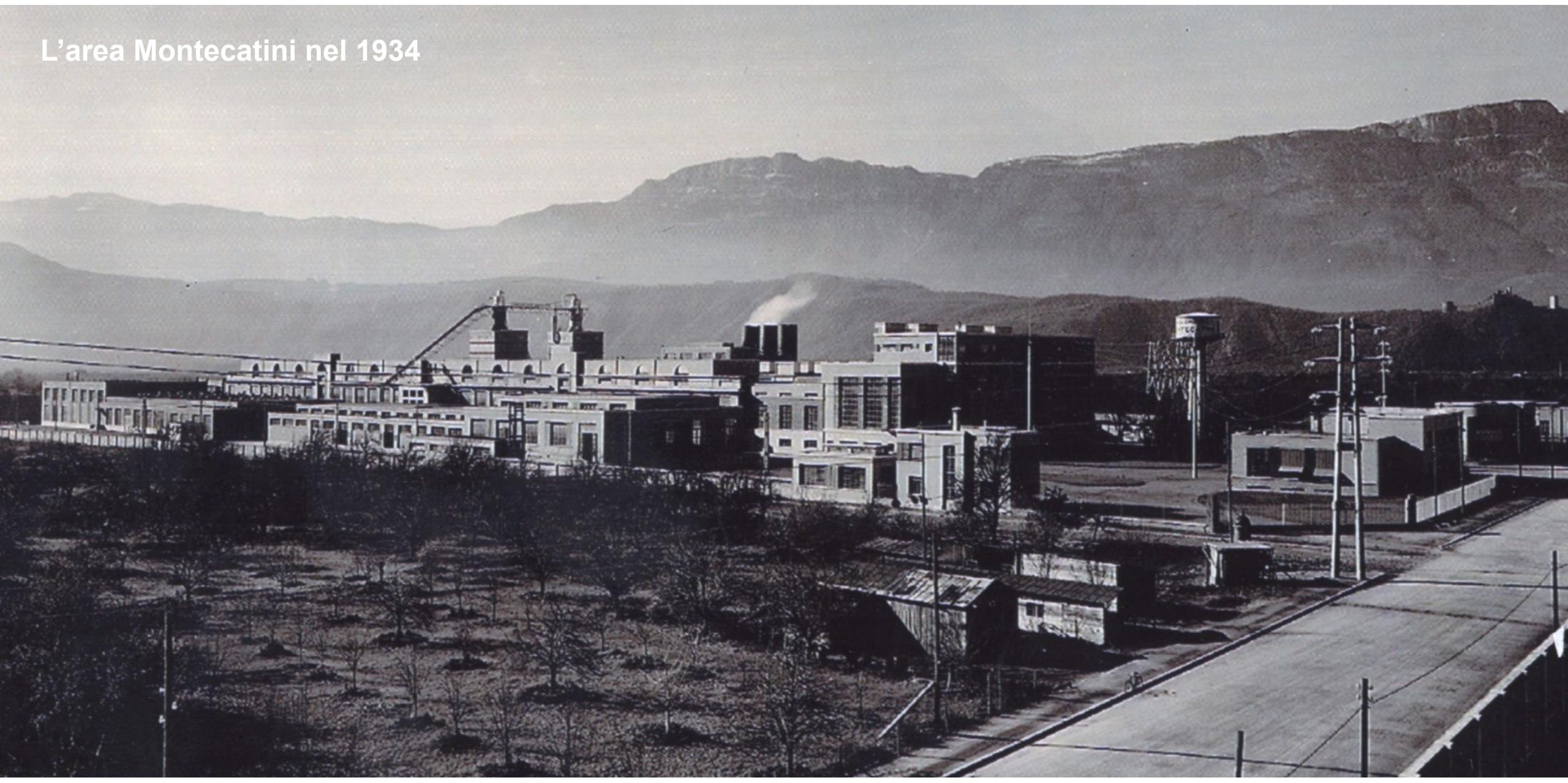








## L'area Montecatini nel 1934

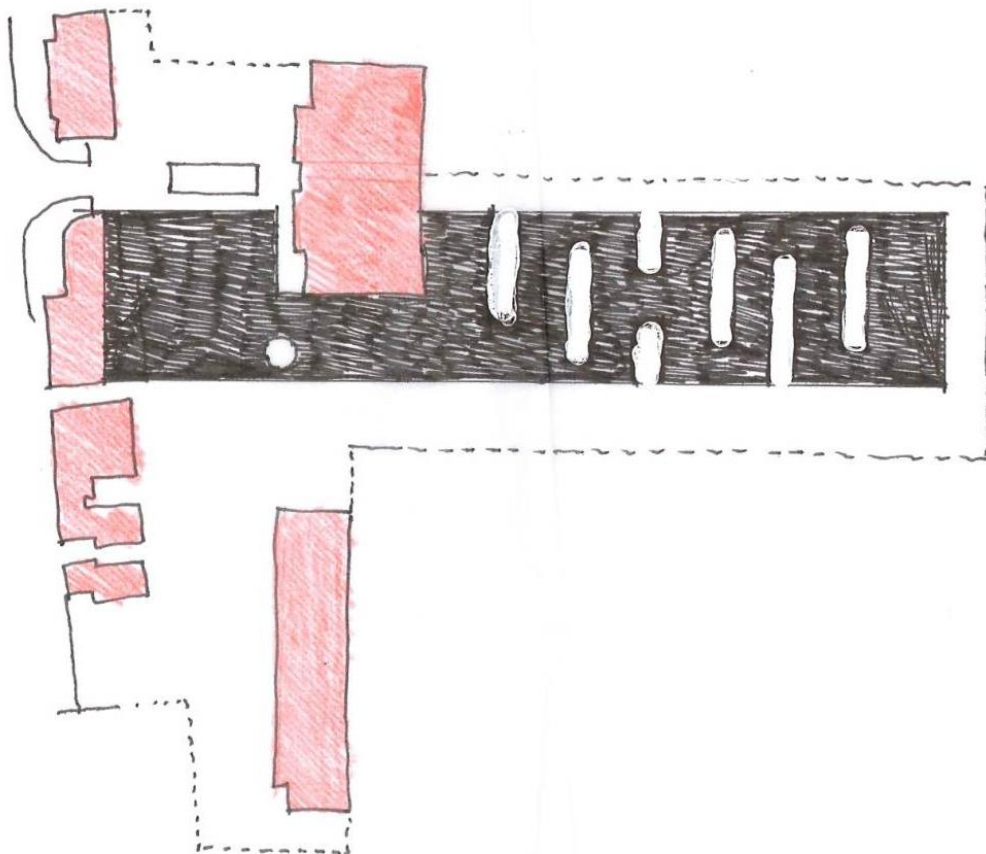


## Le centrali in abbandono





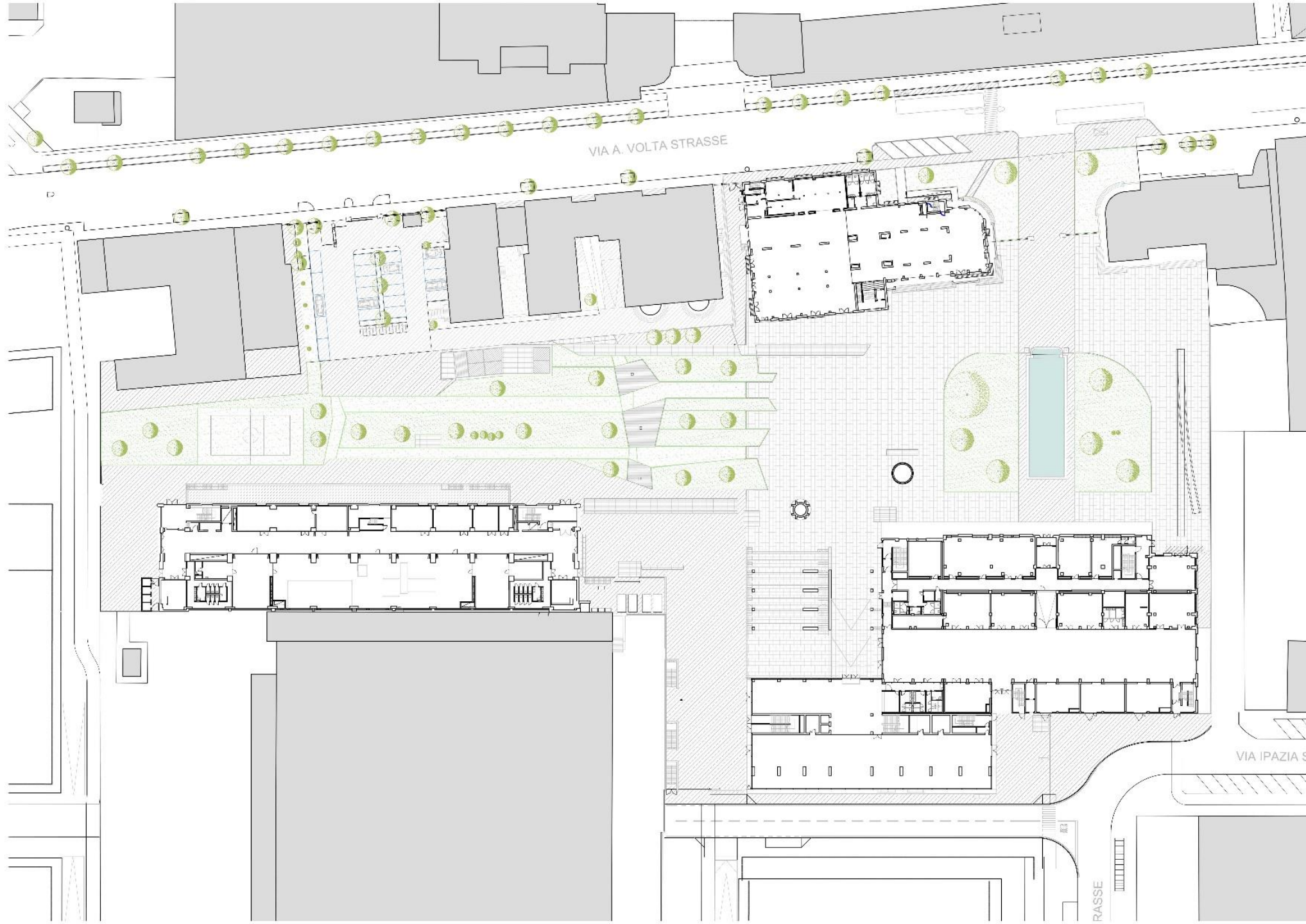
## Il progetto



o/w  
floor  
roof









## Il cantiere













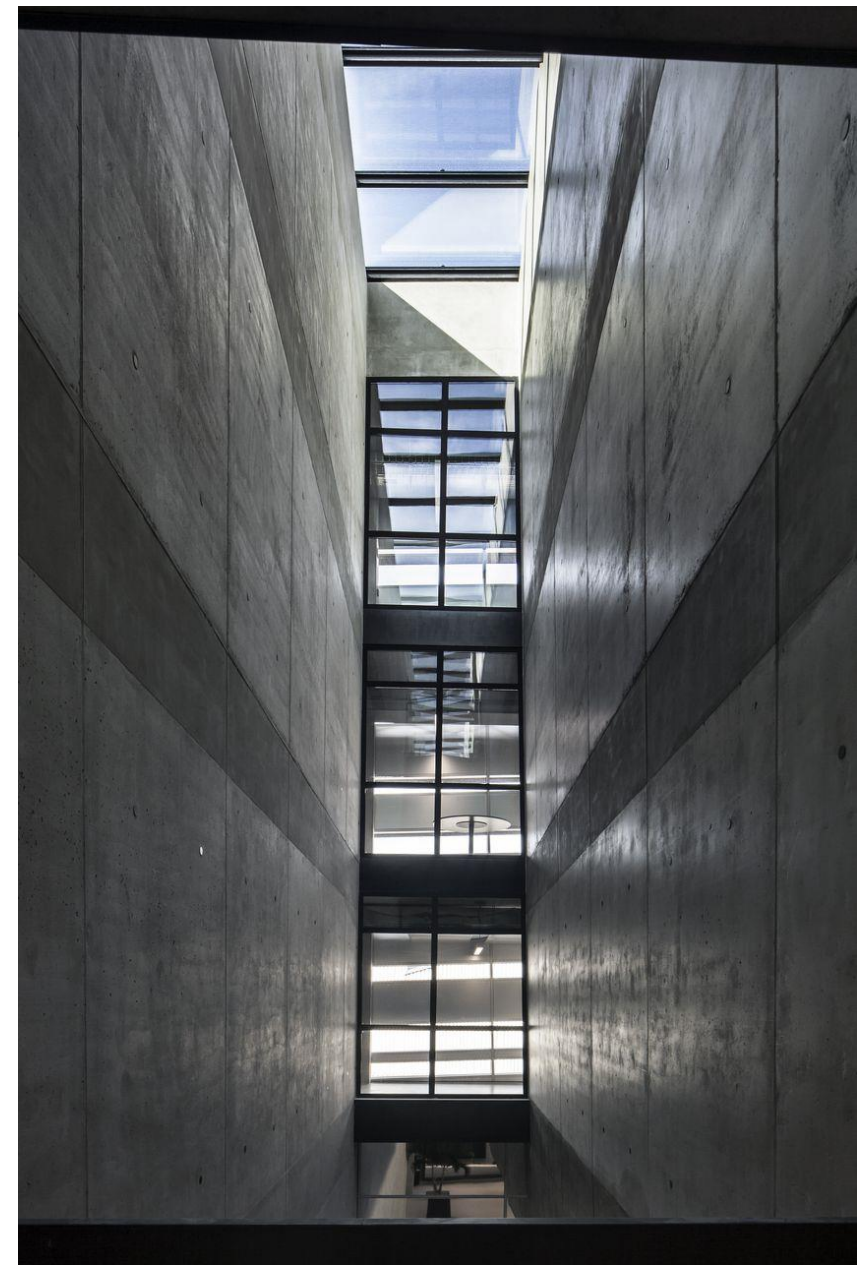


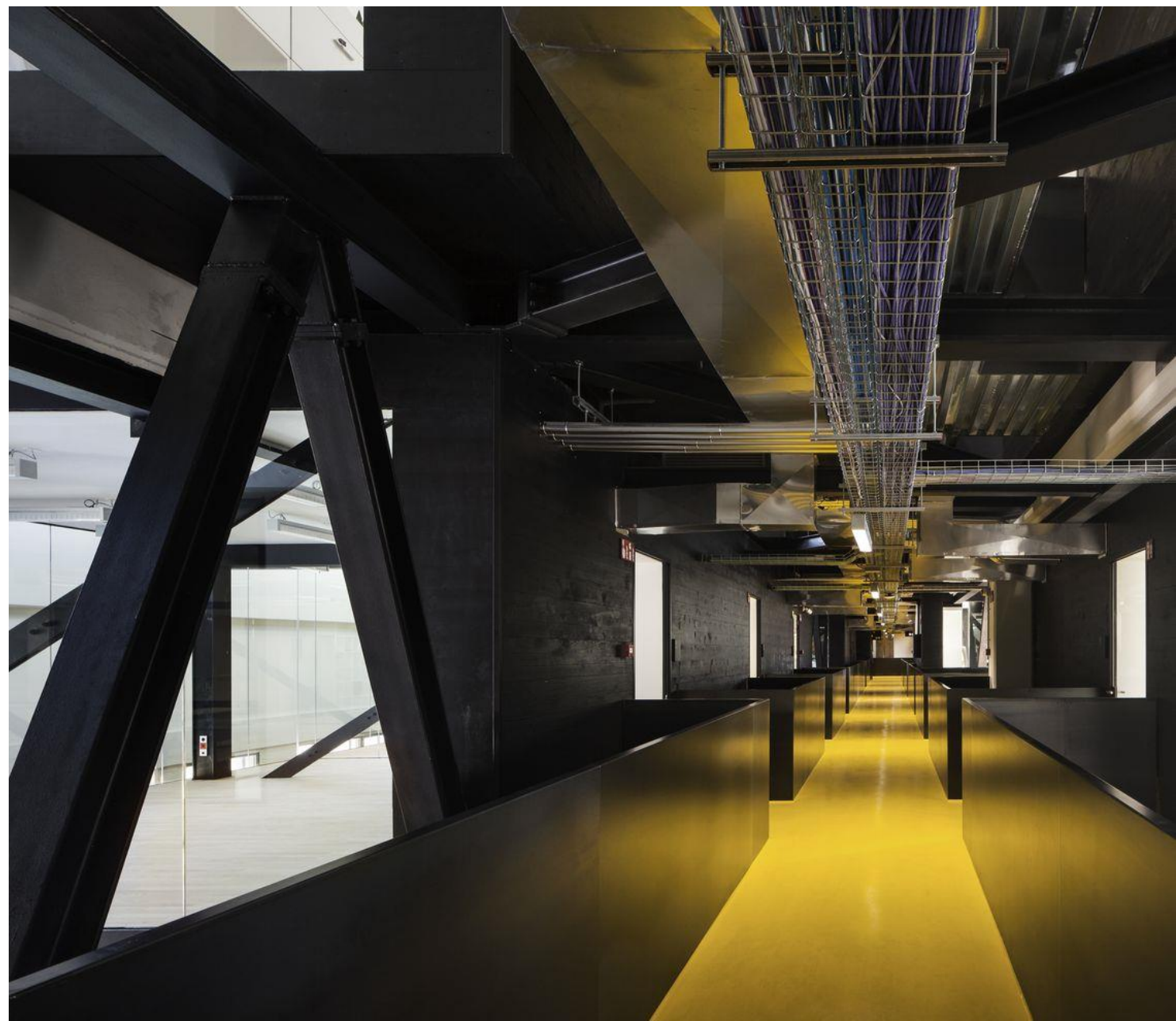
















*‘Se i nostri edifici e le nostre città diventano oggetti ‘amici’, ci invitano alla partecipazione e la incoraggiano. (...) Grazie all partecipazione, stimoleranno le nostre facoltà creative, che sono la base dello sviluppo in tutte le attività umane.’*

*Henry Plummer – L’esperienza dell’architettura.*

tour.edilportale.com



# edilportale<sup>®</sup>

## TOUR 2018

grazie per l'attenzione

tour.edilportale.com

